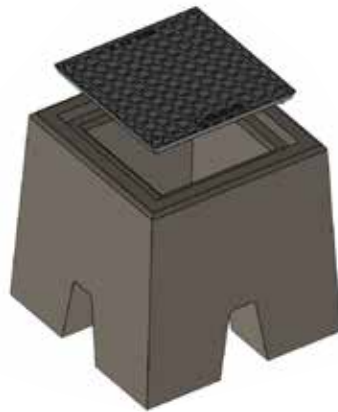




Visit one of our showrooms or learn more at kingsmaterial.com

Cedar Rapids 319.363.0233 Coralville 319.354.1003 Eldridge 563.285.2565 Waukee 515.978.6852

FEATURES

EV Block System
22" x 22" x 24"
650 lbs.

- EV Blocks are precast EV charging point foundations that feature a universal adaptor plate. They're a fast, reliable and simple alternative to standard EV charger installation.
- The universal adapter plate allows the below ground infrastructure to be installed before the EV charger has been specified or selected.
- As a precast pedestal, EV Blocks are ready for installation the moment they arrive. Each one has a uniform structure and finish for consistent visual appeal, and the universal adapter suits Type 1 and Type 2 chargers.
- It saves time, money, and stress while meeting the highest quality standards.
- The Standard EV Block is 22" x 22" x 24" tall and 650 pounds.

INSTALLATION

The streamlined 8-step installation process quickly delivers superior foundations for your electric car charging station. You can install EV Blocks in any weather, meaning you never have to worry about picking the right moment.

- 1) Excavate area where the block will be installed and run conduit
- 2) Install block by lowering it into the prepared excavation
- 3) Prepare Plate for EV charger pole
- 4) Drill fixing holes
- 5) Fit pole to adaptor plate
- 6) Install charger cables
- 7) Fix down adaptor plate via the pre-threaded bolt holes within the block
- 8) Fit charger

The benefits of installing a universal EV charger foundation

As a universal EV charger foundation, the EV Block can accommodate a wide variety of EV chargers currently available in the US market. That means you can complete the groundwork for your EV charging station even before you decide which electric car charger to invest in. This allows any forward-thinking business to take a flexible approach by avoiding disruptions and future proofing their installations.

For more information, please visit evblocks.com/us/



Visit one of our showrooms or learn more at kingsmaterial.com

Cedar Rapids 319.363.0233 Coralville 319.354.1003 Eldridge 563.285.2565 Waukee 515.978.6852