



Rocking America Since 1929

HALQUIST
S T O N E

ROCKING AMERICA SINCE 1929

In 1929 Swedish immigrant John Halquist purchased a 2-acre curbing quarry just outside of Sussex Wisconsin. By the end of World War II, John grew the small quarry, with the help of his son Albin, into what is now one of the largest building stone companies in Wisconsin.

Halquist soon realized that Lannon Stone, quarried in the area since the 1850s, had a good reputation for yielding high quality lime, curbing, paving, foundation and building stone. This reputation allowed the company to enjoy the postwar building boom, and Lannon Stone became the predominately used material for houses and churches in Milwaukee, Chicago and the Northern Midwest. Over the years Halquist Stone became the innovators in the industry with many firsts. We were the first to use diamond saws and stone splitters, first in tumbling stone and making thinstone. Halquist was also the first to locally market stone from around the country and one of the first producers to recycle its waste into agricultural lime and crushed stone. This laid the foundation for what is now a successful aggregate business.

In the late 1990s we added additional capacity with our Chilton and Fond du Lac quarries. This enabled us to provide unique colors and textures to our product line that was not commonly found in natural stone. Today we have the industry's most advanced fabricating equipment, including state-of-the-art 3, 4 and 5-axis CNC machines.

Whether it's in our showrooms, quarries or our national distribution channels you'll find the highest quality building and landscaping stone known to mankind. Because natural stone may be the most versatile product available in building and landscaping, we pay special attention to the details of your plan to ensure that the right stone is specified before the order is placed. Whether you are a homeowner, builder or architect, we encourage you to talk to us very early in the project to discuss the preferred stone for the application you have designed. The team of experts at Halquist can assist you with recommendations that add quality and character throughout the entire project.

The spirit of innovation and customer service still remains today as it did in 1929. At every level of our organization we understand that customer service is job #1. That's why as a homeowner, landscaper, architect, mason, or a quality home builder you can rest assure that we will do everything in our power to gain your trust as your **#1 source** for all your stone needs.



ALBIN AND RON HALQUIST | CIRCA 1949



THE NATURAL FACES OF STONE

Halquist Stone's veneer collection is designed to compliment a wide variety of architectural styles. Whether you're creating a sleek, modern stone accent wall in a bathroom to a more traditional fireplace in the living room, we have some of the most desired colors and textures to choose from.

Most of Halquist Stone's veneer collection comes from the famous Niagara Dolomite, with layers typically ranging from 1" thick to 24" thick. How we use those layers - for size, texture and color - give the unique look that have been used for centuries. The surface colors of all Niagara Dolomites derive from natural iron oxides, which leave colors that blend with local soils to leave a unique look on each stone. Chemical iron oxides are the typical base material for coloring concrete, but with our stone being over 390 million years old, you have a look and durability that no manufacturer can reproduce.

SPLITFACE.

Stone that has been broken by a hydraulic splitter to a specific size.

SEAMFACE.

A vertical crack in the quarry that is exposed to the elements, often showing coloration. This coloration is the edge of the stone.

WEATHEREDGE.

This is a natural alteration by either chemical or mechanical processes due to the action of atmospheric conditions, surface waters, soil and other ground waters, along with temperature changes. The stone features more of a grooved or textured face.

BEDFACE.

The natural top or bottom of a layered stone = a flagstone face. It's also called natural cleft.

ROCKFACE.

Done by hand with a chipping tool, rock face stone is chipped around the perimeter to produce a bold, convex projection along its face. This finish creates a more massive appearance than split face.



SPLITFACE



SEAMFACE



WEATHEREDGE



BEDFACE



ROCKFACE

GROUT TECHNIQUES

Throughout this entire brochure our stone color profiles are shown without grout joints as we focus more on the beauty and color of the stone. We do this because grout - and sometimes the lack of it - has an amazing impact on the look of the final product. All square footage of our product is based on a 3/4 inch average joint.

There are three factors that are very important in stone masonry:

- 1] Selecting the right stone for the project
- 2] Selecting a good mason
- 3] Selecting an appropriate grout technique

Three common grout techniques that masons can do are:

RAKED JOINT.

Also known as a standard joint is achieved by laying each stone roughly one finger width apart from each other, then grouting between each stone. Once the mortar is semi-dry, it's "raked" with a variety of masonry tools to ultimately achieve a consistent depth. This allows the edge of each stone to be seen.

FLUSH OR BRUSHED JOINT.

A flush joint is when a trowel is held flat against the stone or brick and moved along the surface, so as to cut away the excess mortar. The resulting joint is flush with the stone.

OVERGROUT JOINT.

When you compare this in the photographs to the right you'll notice how different the stone looks. The way the grout is applied tends to give the stone a rustic and aged appearance. The joints are widening, dry irregular and overlaps the face of the stone.

COLORED GROUT.

Different colors of grout can also change the impact of the stone. All the stone panels to the right are shown with standard gray mortar. Mortar colors are almost unlimited.

You may wish to have your mason make a mock-up of the grout techniques you wish to use prior to beginning the actual installation and that you understand how the stone will look on a larger scale.

NOTE: ALL STONE SWATCHES IN THIS CATALOG ARE SHOWN WITH NO JOINT DUE TO SIZE LIMITATION WITH THE PANELS. PLEASE CONSULT WITH YOUR ARCHITECT AND DESIGNER FOR BEST GROUT FOR EACH BLEND



RAKED JOINT



FLUSH JOINT



OVERGROUT JOINT



Using Halquist natural stone presents an authentic image to others and cultivates a deeper form of integrity. Nature makes no excuses, puts on no disguises, hides absolutely nothing, and never settles for less than the real thing. And only natural stone can make these claims. The Ledge Collection from Halquist is one of our most popular ashlar shaped profiles for this exact reason.

The ageless beauty of natural stone is exemplified with the Ledge Collection. This collection offers blends of weathered, seamface and snapped edge stone which will determine size, texture and color. Depending on how it is installed, you can vary the final look of your project.

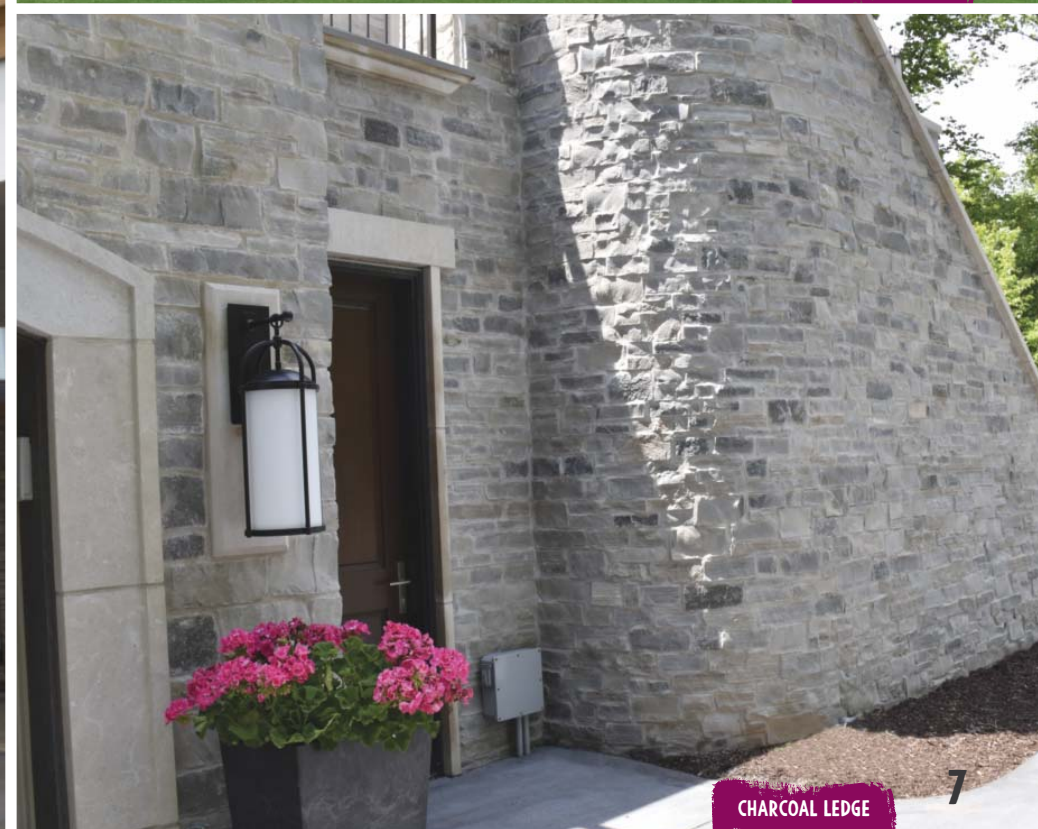




TAMARACK



CHILTON FULL COLOR



CHARCOAL LEDGE

MESQUITE

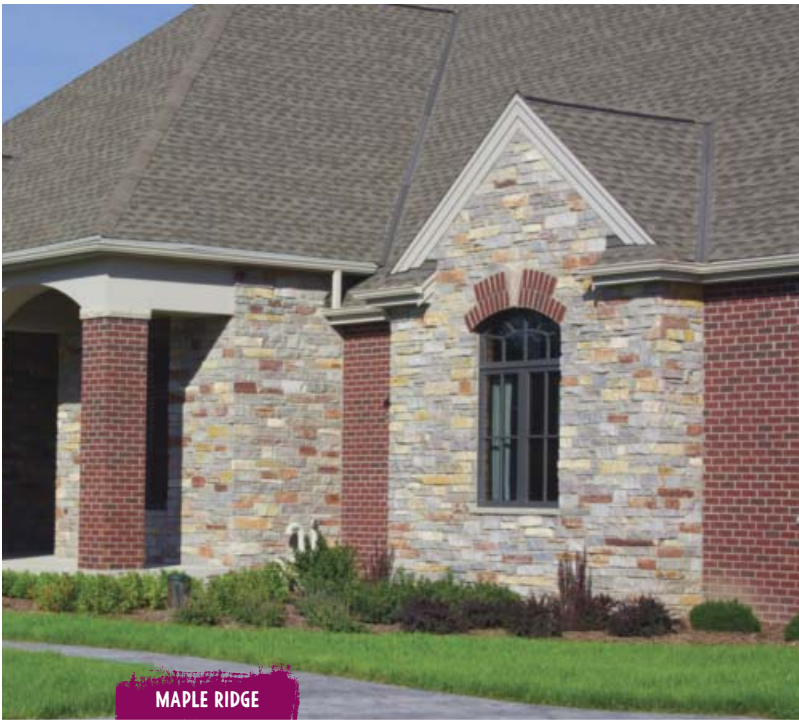


BROOKFIELD GREY



SANDHILL RUSTIC





MAPLE RIDGE



FOND DU LAC LEDGE



FOND DU LAC RUSTIC





AUBURN LEDGE | LEDGE



BEAVER CREEK LEDGE | LEDGE



BLACK FOREST | LEDGE



BROOKFIELD BUFF | LEDGE



BROOKFIELD FULL COLOR | LEDGE



BROOKFIELD GREY | LEDGE



CASCADE | LEDGE



CHARCOAL LEDGE | LEDGE



CHARCOAL WEATHEREDGE | LEDGE



CHILTON COBBLEFIELD | LEDGE



CHILTON IVORY | LEDGE



CHILTON LEDGE | LEDGE



CHILTON BROWN | LEDGE



CHILTON FULL COLOR | LEDGE



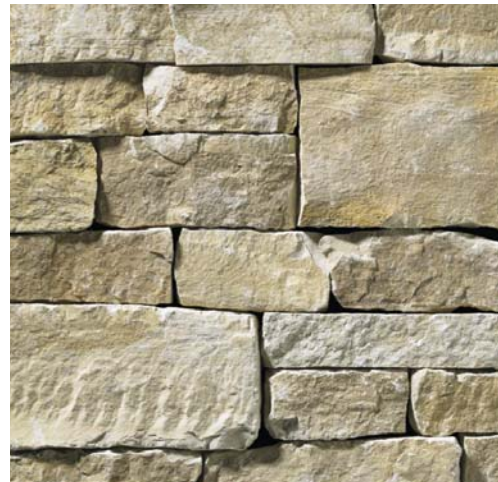
CHILTON RED | LEDGE



FOND DU LAC COBBLEFIELD | LEDGE



FOND DU LAC LEDGE | LEDGE



FOND DU LAC RUSTIC | LEDGE



FOREST | LEDGE



MAPLE RIDGE | LEDGE



MAYVILLE | LEDGE



MESQUITE | LEDGE



SANDHILL CREME | LEDGE



SANDHILL RUSTIC | LEDGE



SILVERLEDGE | LEDGE



SYCAMORE | LEDGE



TAMARACK | LEDGE



TUMBLED BROOKFIELD | LEDGE



TUMBLED CHILTON COBBLEFIELD | LEDGE



TUMBLED CHILTON IVORY | LEDGE



TUMBLED CHILTON LEDGE | LEDGE



TUMBLED SILVERLEDGE | LEDGE



WINNEBAGO | LEDGE







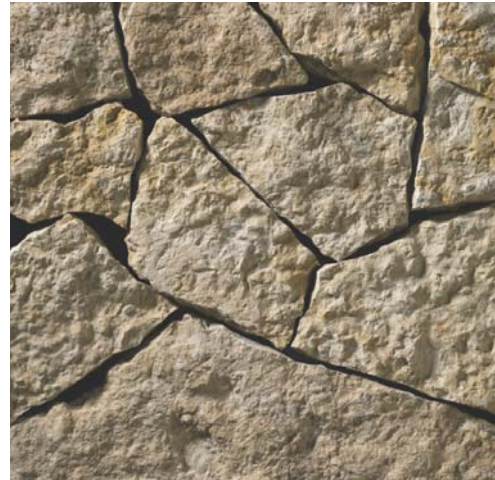
Throughout history, natural stone has been the premier building material. Its timeless elegance and lasting durability has made it ideal in countless applications. Building naturally means using pure stone in all your applications and never settling for less than authenticity.

The **Mosaic Collection** from Halquist Stone is a style of stones that are very rugged and irregular bedface stone. The random shapes and sizes of these rough-edge stones create exciting patterns for both contemporary and rustic classics.





ASHFORD | MOSAIC



BEAVER CREEK WEBWALL | MOSAIC



CHALET BUFF MOSAIC | MOSAIC



CHALET GREY MOSAIC | MOSAIC



CHILTON WEBWALL | MOSAIC



FOND DU LAC WEBWALL | MOSAIC



FOND DU LAC SILVER WEBWALL | MOSAIC



KOHLER | MOSAIC



LANNON BUFF WEBWALL | MOSAIC



LANNON FULL COLOR WEBWALL | MOSAIC



LANNON GREY WEBWALL | MOSAIC



PLUM CREEK MOSAIC | MOSAIC

KOHLER FULL COLOR



STOCKBRIDGE | MOSAIC



TUMBLED VICTORIA | MOSAIC



VICTORIA | MOSAIC

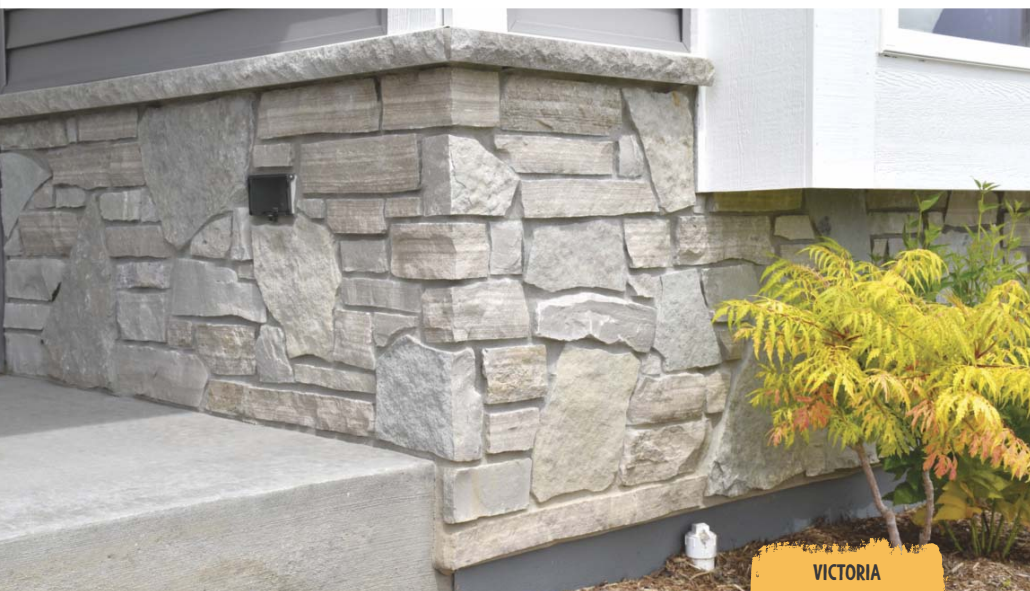


SIGNS THAT TURNS HEADS.

In today's world, you must grab someone's attention at a moments notice. Using creative outcropping signage from Halquist Stone can help your project stand out from the crowd. Whether you're in need of a sign for an entrance of a neighborhood subdivision, a corporate office or even a retail store, Halquist has a wide variety of colors, sizes and shapes to meet your needs. We will take your logo and sandblast it with custom paint that will last for years to come.



LANNON FULL COLOR WEBWALL



VICTORIA



LANNON BUFF WEBWALL



LANNON GREY WEBWALL

NATURAL STONE. A BRIGHT IDEA FOR GREEN BUILDING.

Congratulations on your decision to select natural stone! Halquist Stone takes being “green” extremely seriously. Natural stone is Mother Nature’s original green building material. It is neither bonded together by petroleum based resins nor created in a factory. Natural stone flooring and countertops will not need to be replaced for a long time, are 100% recyclable, do not emit VOC’s into your home and can be cleaned with Ph-neutral dish detergent. After all, what can be greener than a product that comes directly from the Earth?

Competing materials often claim to be green, but with stone’s enduring life cycle, ease of care and maintenance and durability make it an excellent choice for your project.

WHAT IS GREEN BUILDING?

A sustainable or green building is the outcome of a design process which focuses on increasing the efficiency of resource use - energy, water, and materials - while reducing a building’s impact on human health and the environment during its life cycle; through better site selection, design, construction, operation, maintenance and eventual disposal or removal.

Halquist Stone follows strict internal guidelines from an environmental perspective. As an architect or builder, choosing to work with Halquist Stone will make a major difference in being good stewards of the Earth.



ENDURING LIFE CYCLE

Natural stone stands up to weathering and time better than any other building material - natural or manmade. Period. This has been proven through the ages. The Egyptian pyramids, the Parthenon or any ancient city offer lessons that demonstrate natural stone is the most sustainable building material available.

DURABLE.

When choosing to install a stone floor, countertop, wall cladding, etc., you are making a decision to use a product that will last for at least 100 years in many cases and certainly for the life of the building in most.

HALQUIST STONE QUARRIES ARE 100% RECYCLABLE!

No other building material is as recyclable as natural stone. Halquist Stone is proud that 100% of our stone is recyclable, which can not be said for all quarries. What we quarry out of the ground not only is used to create beautiful homes and commercial buildings, but also used on roads in a three state area. Whatever is not deemed appropriate for roads we grind the stone up into an Agricultural Lime so farmers can put nutrients back into the soil.

RECLAIMING QUARRIES

In our 87 year history, we have fully reclaimed two quarries in the Lannon area and another in Chilton, Wisconsin. Halquist is currently the only operator in these areas that have fully reclaimed our land. We not just talk about being good stewards of the land, we practice it.

ZERO VOC EMISSION

Research conducted by the University of Tennessee’s Center For Clean Products found that natural stone does not directly emit any VOCs (Volatile Organic Compounds). Stone may source VOCs from adhesives and applied sealants, however, low and no-VOC options are available.

WATER RECYCLING

Halquist Stone utilizes a water filtration system for our waste water. We are proud to also be on the cutting edge of an exciting new closed loop water recycling system. These closed loop systems allow us to recycle 100% of water used in the fabrication of natural stone, dramatically lowering our water consumption.

HEAT ISLAND AFFECT

Many light-color varieties of natural stone have been shown to lower a building’s or site’s “heat island” through their ability to reflect heat. Heat island refers to the concept of a building raising the average temperature of the area surrounding a building and site.

LEED® CREDITS

The LEED® (Leadership in Energy and Environment Design) Green Building Rating System is the most widely used rating system for green building. This system defines standards for environmentally responsible, healthier, and more profitable structures, and awards points to new construction and major renovations in **five categories**: Sustainable Sites, Water Efficiency, Energy and Atmosphere, Materials and Resources, and Indoor Environmental Quality. For more information visit the www.usgbc.org.

The image shows the exterior of a 'The Container Store' building. The building features a large section of white horizontal panels with the store's name in blue 3D lettering. To the right and below this section is a wall of light-colored, textured stone veneer. The stone is arranged in a random ashlar pattern. In the foreground, there are several small evergreen trees and a dark mulch bed. The sky is clear and blue.

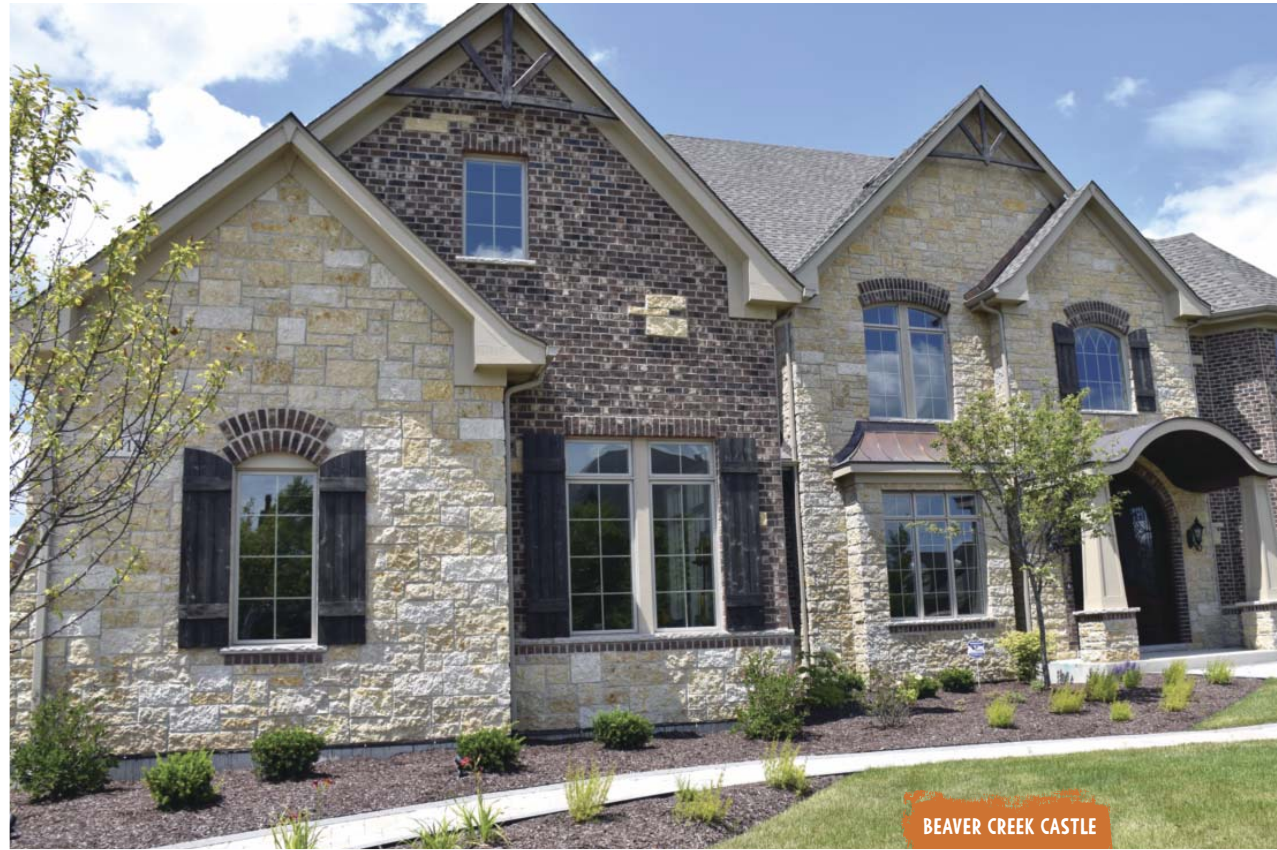
The Container Store

Castlestone from Halquist is one of the most beautiful collections of natural stones available. This stone is a selection of stones that are set in a random ashlar pattern dominated with taller or blocky pieces. The blends may consist of bedface, splitface or hand-rockfaced pieces.

For a rugged look, the Castlestone Collection is dimensioned by either split or sawed heights. A sawed bed is also easier for the masons to install and more economical on the bottom-line. We usually leave a 1/2" gap for sawed bed mortar joints. A more formal and clean-edged look is available in a rich blend of textures and colors for an unmistakable design expression.



TUMBLED KODIAK CASTLE



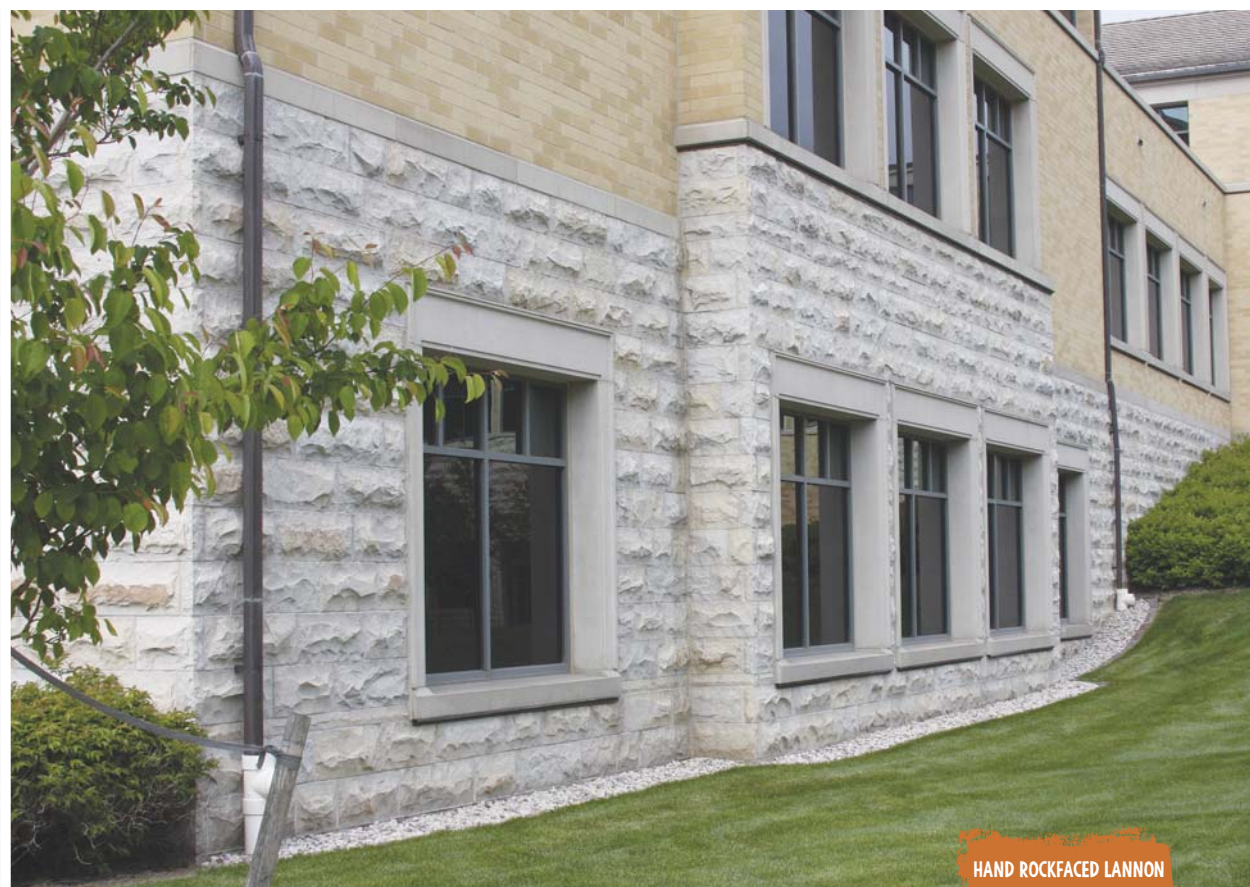
BEAVER CREEK CASTLE

COPENHAGEN





SONOMA



HAND ROCKFACED LANNON

CONCORD







With your ideas, a clean slab of rock and his chisel, a Halquist craftsman can create nearly anything you desire.

To find out more about the near endless possibilities of hand rockfaced stone, ask a Halquist sales representative today.

BUILT WITH VALUES.

From investing in state-of-the-art equipment and following the same values of quality that our founder, John Halquist, instilled into the framework of our company 87 years ago, we continue to lead the building and landscaping stone industry with quality and unparalleled customer service.

With the land that covers our nine quarries, Halquist Stone provides some of the most unique colors and textures made from the best stuff on Earth. Through their keen eye to detail, our craftsmen work hard to create a product that's more than just stone that covers a building, but a lasting architectural masterpiece. Halquist has some of the most advanced technology in the industry, including state-of-the-art 3, 4 and 5-axis CNC machines.

The spirit of innovation and customer service at Halquist Stone still remains as it did in 1929. At every level of our organization we understand that customer service is job #1. That's why as a homeowner, landscaper, architect or a quality home builder you can rest assured that we will do everything in our power to gain your trust as your #1 source for all your natural stone needs.



BEAVER CREEK CASTLE | CASTLE



BEAVER CREEK DIMENSIONAL | CASTLE



BILTMORE | CASTLE



CARBONDALE | CASTLE



CHATEAU | CASTLE



COLONIAL | CASTLE



CONCORD | CASTLE



COPENHAGEN | CASTLE



DIMENSIONAL CHALET BUFF | CASTLE



DIMENSIONAL CHALET GREY | CASTLE



GREY/BUFF CHATEAU | CASTLE



HAMILTON BUFF | CASTLE



HAMILTON GREY | CASTLE



HAND ROCKFACED LANNON | CASTLE
SHOWN IN GREY/BUFF MIX



KODIAK CASTLE | CASTLE



IDEAL | CASTLE



IDEAL BUFF | CASTLE



LANDMARK | CASTLE



LONG ISLAND | CASTLE



MAYFAIR BUFF | CASTLE



MAYFAIR FULL COLOR | CASTLE



MAYFAIR GREY | CASTLE



MIDDLETON | CASTLE



MONARCH | CASTLE



PLUM CREEK DIMENSIONAL | CASTLE



PRINCETON | CASTLE



REGAL | CASTLE



RUBICON | CASTLE



SEVILLE | CASTLE



SMOKEY MOUNTAIN | CASTLE



SONOMA | CASTLE



SUSSEX BUFF | CASTLE



SUSSEX GREY | CASTLE



TUMBLED BILTMORE | CASTLE



TUMBLED CHATEAU | CASTLE



TUMBLED COPENHAGEN | CASTLE



TUMBLER GREY/BUFF CHATEAU | CASTLE



TUMBLER SONOMA | CASTLE



VANDERBILT | CASTLE



WAUKESHA BROWN | CASTLE



WAUKESHA BUFF | CASTLE



GREY/BUFF CHATEAU

LOOKING FOR EVEN MORE IDEAS?

Whether you're at home or on the go, visit us at halquiststone.com for the latest videos, downloadable information and an ever changing photo gallery.

Scan this QR Code with your phone or tablet for all your resources on stone!



COLONIAL

CIRCA 1950S

ALSO FEATURES PEWTER LANNON BANDING
QUEENS, NEW YORK



WAUKESHA BROWN



LONG ISLAND

CONCORD



IDEAL

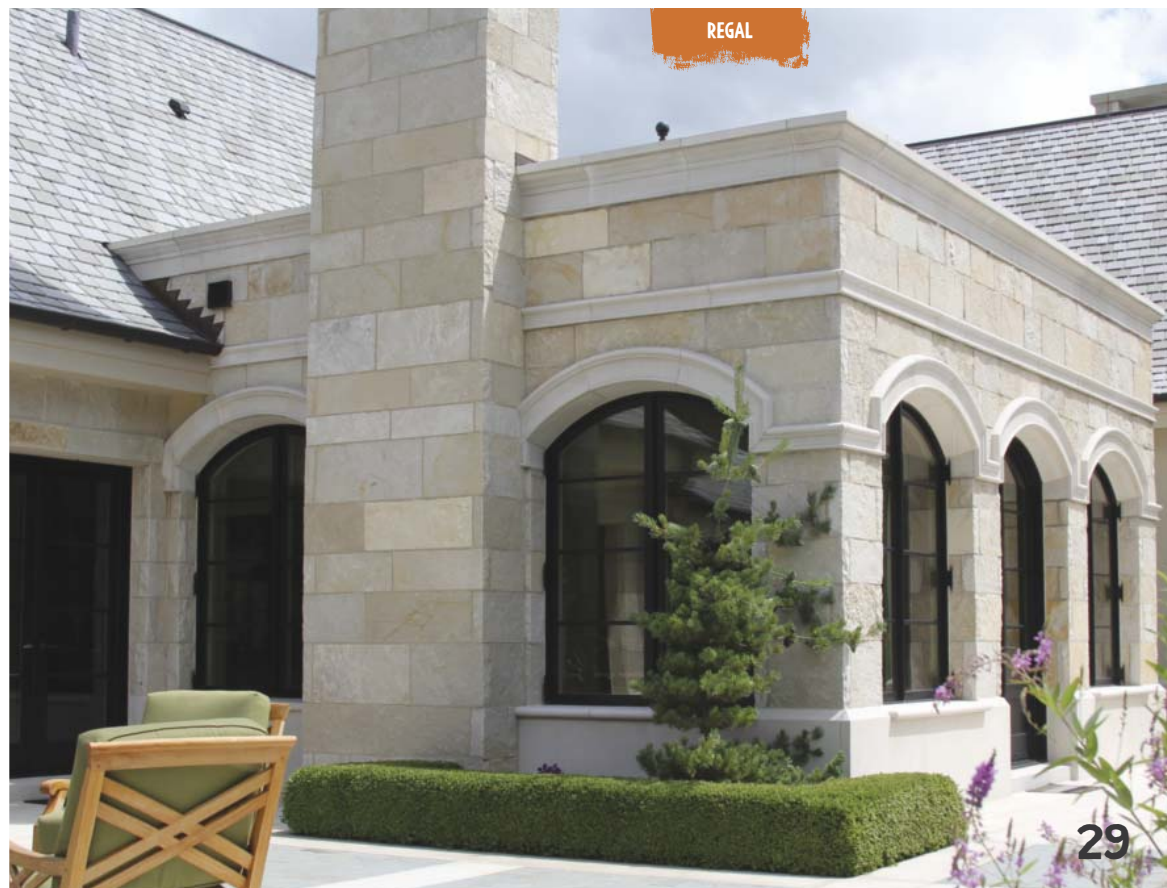


KOHL'S HEADQUARTERS
MENOMONEE FALLS, WISCONSIN



SUSSEX GREY

REGAL



ITS ALL ABOUT THE DETAILS!

The dedication to providing our customers with the best stuff made on Earth is what transcends the ordinary into a body of work that inspires the soul.

The staff at Halquist Stone are dedicated to helping you bring your ideas to life. We invite you to visit our 8,000 square foot designer showroom along with over 4-acres of outdoor displays. After you've had an opportunity to look over the many options that are available to you, we can help you take the next step in designing the home or commercial project of your dreams. With nine quarries and fabrication facilities throughout Wisconsin and our Arizona operations, you won't find a better selection of colors and textures delivered to you in a timely fashion.



CORPORATE OFFICE AND DESIGNER SHOWROOM | SUSSEX, WISCONSIN



FULL VENEER/LANDSCAPE PRODUCTION | LANNON FACILITY



A HALQUIST CRAFTSMAN INSPECTS THE PRODUCTION QUALITY OF A THINSTONE CORNER PIECE. NEARLY 9,000 SQFT OF THINSTONE MATERIAL IS PRODUCED DAILY AT OUR FACILITIES IN LANNON, SUSSEX AND FOND DU LAC, WISCONSIN.

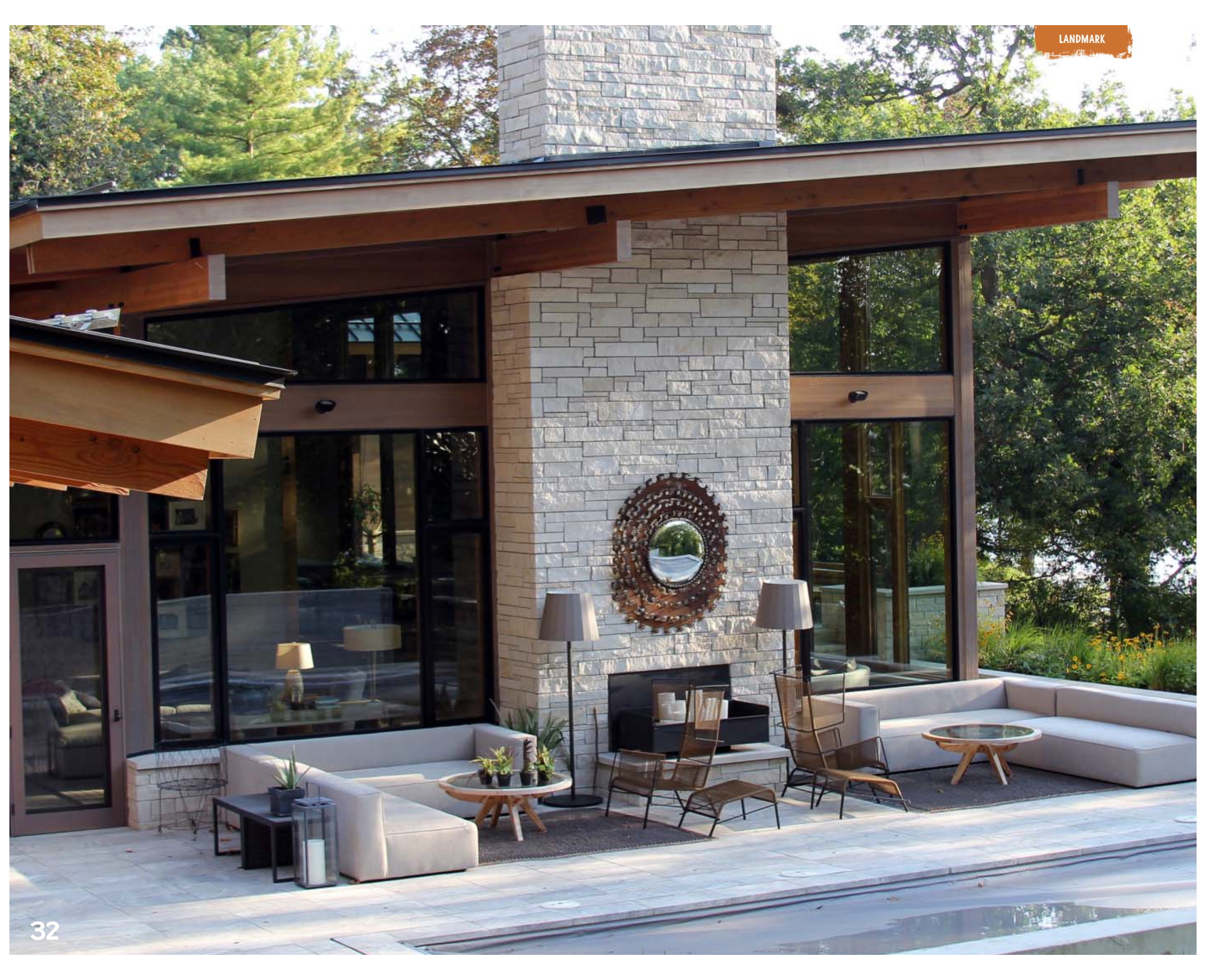
THINSTONE CORNER PRODUCTION | IDEAL FACILITY | SUSSEX, WISCONSIN

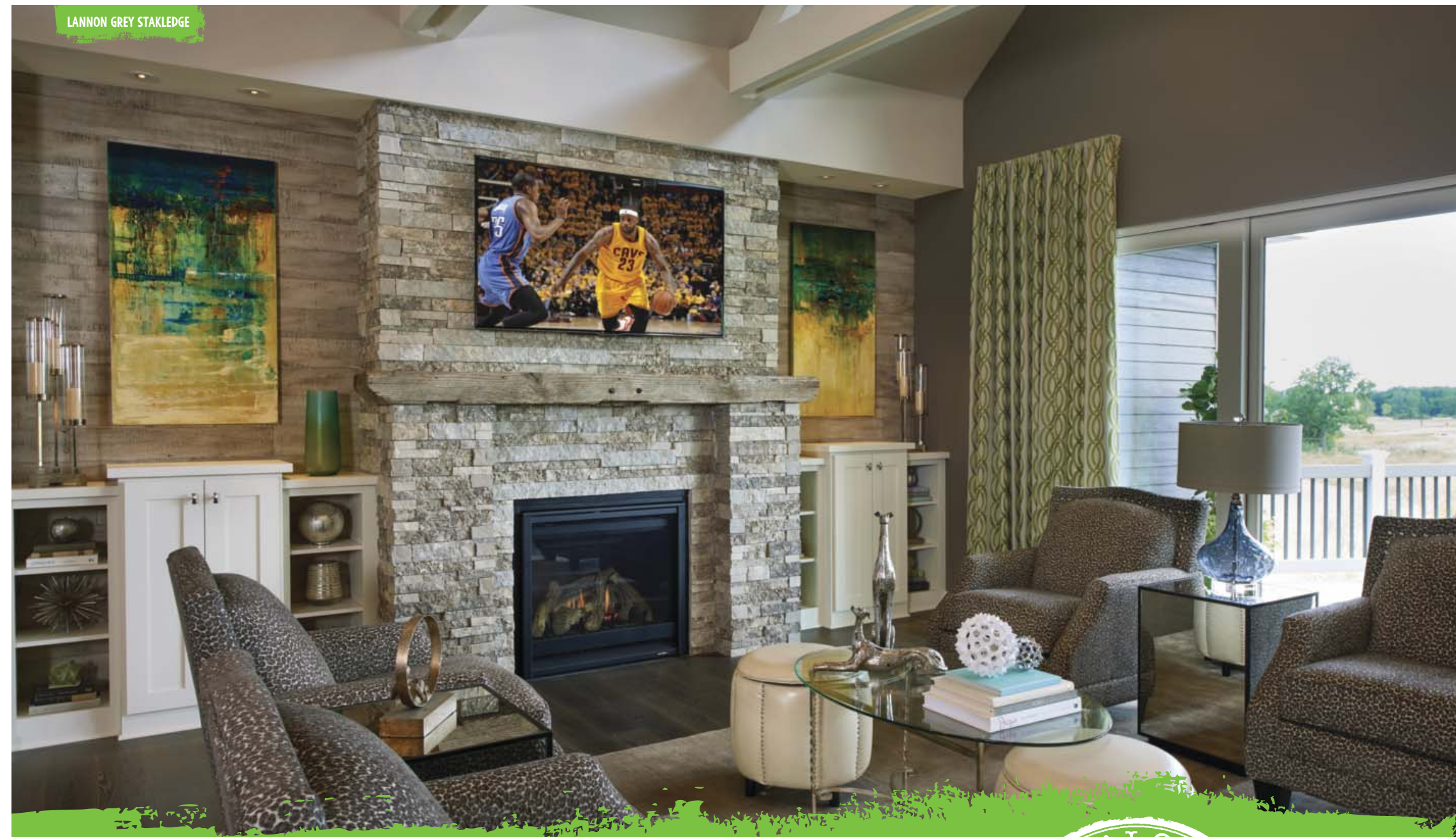


LANNON QUARRY | LANNON, WISCONSIN



CHILTON QUARRY | CHILTON, WISCONSIN





Increasingly, the use of stone isn't limited to exteriors and facades. More and more, stone is finding its way inside homes. Stone brings warmth and character to stainless-steel kitchens. It introduces subtle color to bedrooms, dining rooms and bathrooms.

Our Stakledge Collection comes in a variety of heights, random lengths and as individual pieces. This will provide you with a more natural and rustic appearance that is easier to handle, cut and install than a panel. Stakledge is designed for a dry-stack installation and has 90-degree corners available as well. So be prepared to be dazzled with this expressive material that's revolutionizing stone.





BEAVER CREEK MARSH | STAKLEDGE



CHARCOAL | STAKLEDGE



CHILTON | STAKLEDGE



CHILTON RUSTIC | STAKLEDGE



AVAILABLE IN
THIN ONLY

COHO | STAKLEDGE



AVAILABLE IN
THIN ONLY

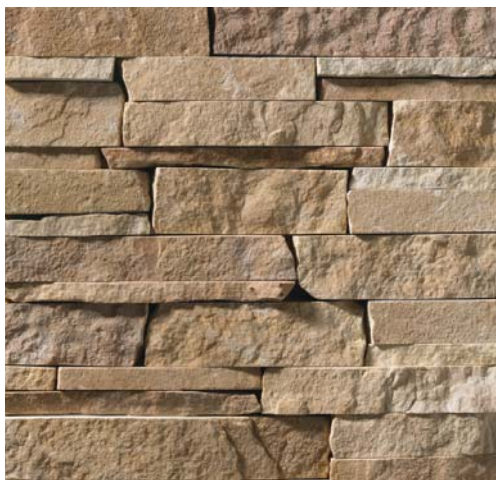
COPENHAGEN | STAKLEDGE



FOND DU LAC BUFF | STAKLEDGE



FOND DU LAC SILVER | STAKLEDGE



KODIAK | STAKLEDGE



LANNON BUFF | STAKLEDGE



LANNON GREY | STAKLEDGE



AVAILABLE IN
THIN ONLY

RICHMOND LEDGE | STAKLEDGE



AVAILABLE IN
THIN ONLY

STEELHEAD | STAKLEDGE



AVAILABLE IN
THIN ONLY

VICKSBURG | STAKLEDGE



WILSEY BAY | STAKLEDGE





COPENHAGEN STAKLEDGE



COHO



CHILTON RUSTIC STAKLEDGE



CHARCOAL STAKLEDGE



RICHMOND LEDGE



Design your projects to stand out, to reflect your passion, your taste and your personality. Natural stone from Halquist is a one-of-a-kind building material that sets you apart from others because it can't be mimicked, manufactured, or faked. It is for those with imagination that never expires.

The collection incorporates natural- free form chunks or boulders giving your project a timeless old world look to be enjoyed for years to come. Natural stone will give you an unparalleled beauty, quality and value.





BEAVER CREEK COBBLES | BOULDER



BIRCHWOOD COBBLES | BOULDER



FIELDSTONE COBBLES | BOULDER



LISBON | BOULDER



LISBON BUFF | BOULDER



LISBON CHARCOAL | BOULDER



NIAGARA BOULDERS | BOULDER



SPLIT FIELDSTONE | BOULDER

TAKE A CLOSER LOOK...

Not all stone is created equal. That's why you'll find Halquist natural stone almost anywhere you go. If you're building that get away in Martha's vineyard, an outdoor gourmet kitchen, or just a simple fireplace in the living room, Halquist has a stone solution. Discover the natural stone that more architects from around the country ask for.





SPLIT FIELDSTONE



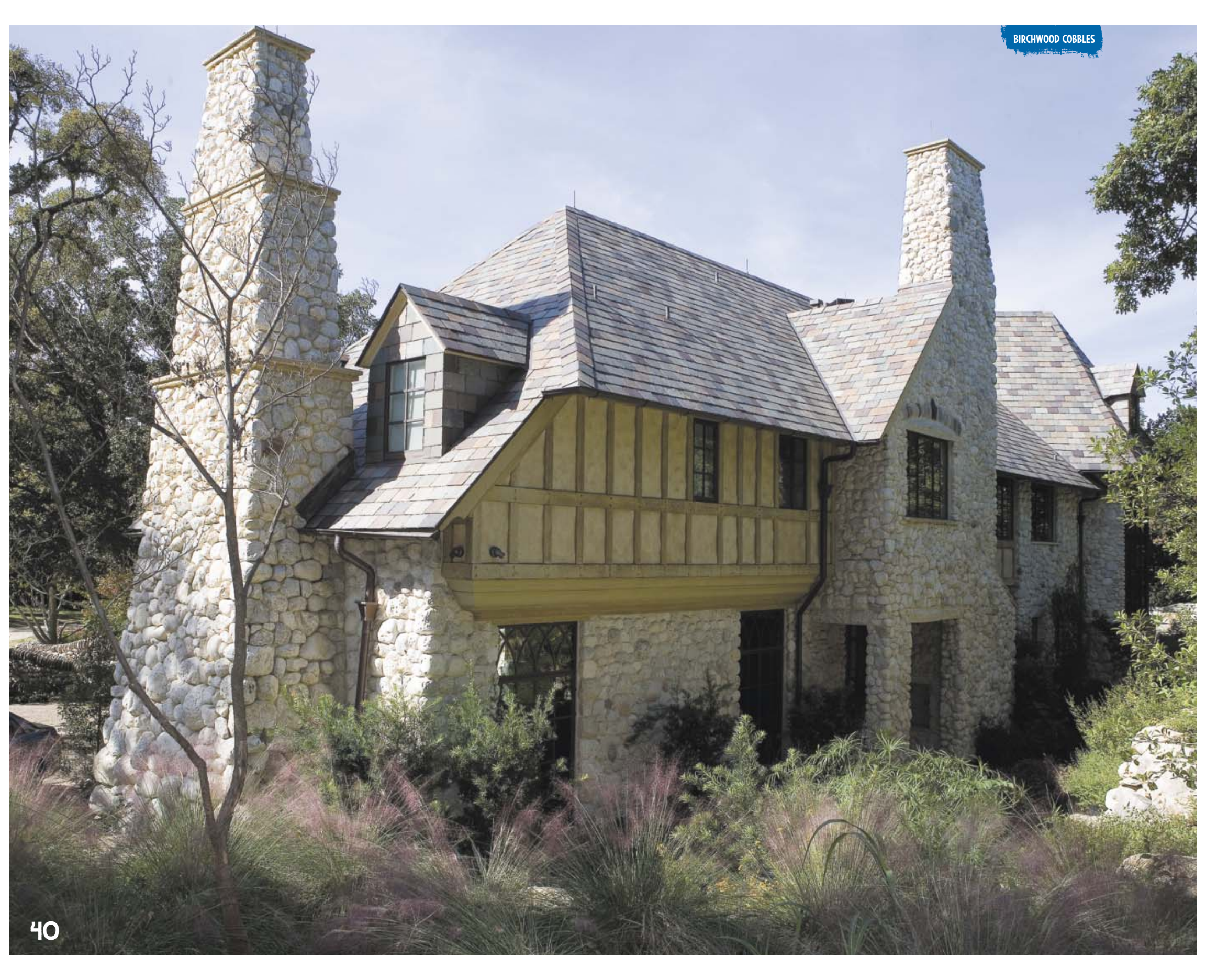
LISBON BUFF



NIAGARA BOULDERS



FIELDSTONE COBBLES



THINSTONE VS. FULL VENEER

So you like the look that mother nature provides in our full veneer, but just doesn't fit your project - don't fret!

For starters, we use real building stone and saw or split the fronts off of the stone, giving you one-of-a-kind textures and tones that simply can't be duplicated. Second, as you can see by viewing our pictures, you can't tell the difference once the Thinstone is installed whether its 4-inches thick, or 1½ inches thick. Third, every version of our dolomite comes in thin or full veneer. Finally, Halquist Thinstone is much easier to install than regular building stone and it can be applied to almost any surface.

ADVANTAGES OF HALQUIST THINSTONE

All full veneer products are available as Halquist Thinstone. Thinstone is approximately ¾ to 1¼ inches thick compared to our nominal 4-inch full veneer. This allows natural stone to be applied anywhere due to the light weight of Thinstone and the ability to apply it to most substrates.

COST. Thinstone is light in weight, which is faster and quicker to install - allowing mason contractors to install more square footage per day. The difference in weight of Thinstone versus full veneer allows almost 400% more square footage that can be shipped by the truckload. This saves not only on freight and energy consumption to deliver the product, but helps Halquist's goal of providing an eco-friendly product through our green building initiative.

APPEARANCE. It's all about curb appeal. Besides landscaping, the use of natural materials is one of the most desirable features of the exterior of the home. Mother nature created it. Halquist Stone perfected it. Thinstone is comparable in weight, price and installation to artificial stone. With that being said, the obvious choice is natural stone.

CONSTRUCTION. Thinstone *does not require a ledge or footing* like conventional full-size stone. It's supported by the wall rather than the footing underneath. That's where a substantial amount of savings is. A house can be constructed from conventional methods rather than framing it for masonry.

In the world of architectural stone, there are more and more options available. And no matter how you look at it, full veneer is still the gold standard in masonry. Full veneer averages about 40 square feet per ton (about 55 pounds per square foot). The typical bed depth of full veneer is 3" to 5".

BENEFITS OF FULL VENEER

- Ability to show the full texture of the stone, including shadows and shelves with different grout techniques
- Depending on the style you choose, the cost of the quarrying may be less for the full veneer
- More flexibility at the jobsite



EVER WONDER HOW EASY IT IS TO INSTALL HALQUIST THINSTONE? While the six illustrations at the bottom make it look easy, it's actually as simple as installing the manufactured stuff all at a comparable price. To find out for yourself how simple it is to having the beauty of natural stone and staying within your budget, **request your complimentary DVD copy of *How To Install Halquist Thinstone*** today at halquiststone.com or scan the QR Code. Once you watch it you'll wonder why you ever went artificial.

MOST VENEERS SHOWN IN THIS CATALOG ARE AVAILABLE IN EITHER FULL VENEER OR THINSTONE.



INSTALLATION MADE EASY.



PREPARE THE SURFACE

APPLY THE MORTAR

INSTALL CORNERS FIRST

INSTALL THE FLATS

GROUT THE JOINTS

FINISH THE JOINTS



Natural stone from Halquist comes in a broad range of colors, patterns, finishes and textures. Think back to when you were a kid and found different colored stones that were beautifully unique. Natural stones diversity and what you can do with it aesthetically is about as varied as your imagination.

The blend collection combines a wide variety of stones into one beautiful blend. They represent a mixture of weatheredge, splitface, bedface and boulders. So no matter what your vision, Halquist can help bring it to reality.





ROCHESTER



CAMBRIDGE



STERLING GREY



ARROWHEAD | BLEND



BEAVER CREEK MARSH | BLEND



BEAVER CREEK PRAIRIE | BLEND



CALUMET | BLEND



CAMBRIDGE | BLEND



GENEVA | BLEND



KENSINGTON | BLEND



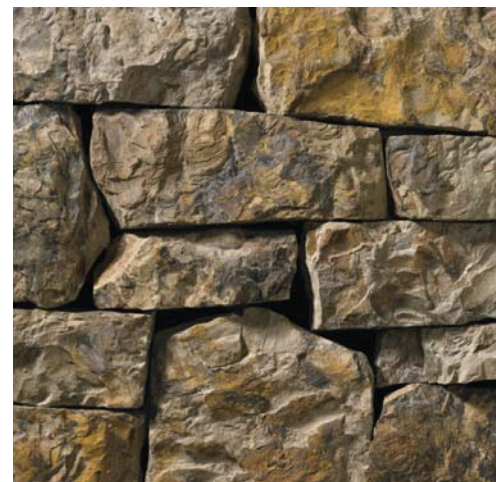
KINGSTON | BLEND



MANCHESTER | BLEND



ROCHESTER | BLEND



RUSTIC STRIP | BLEND



STERLING GREY | BLEND



TREVINO | BLEND



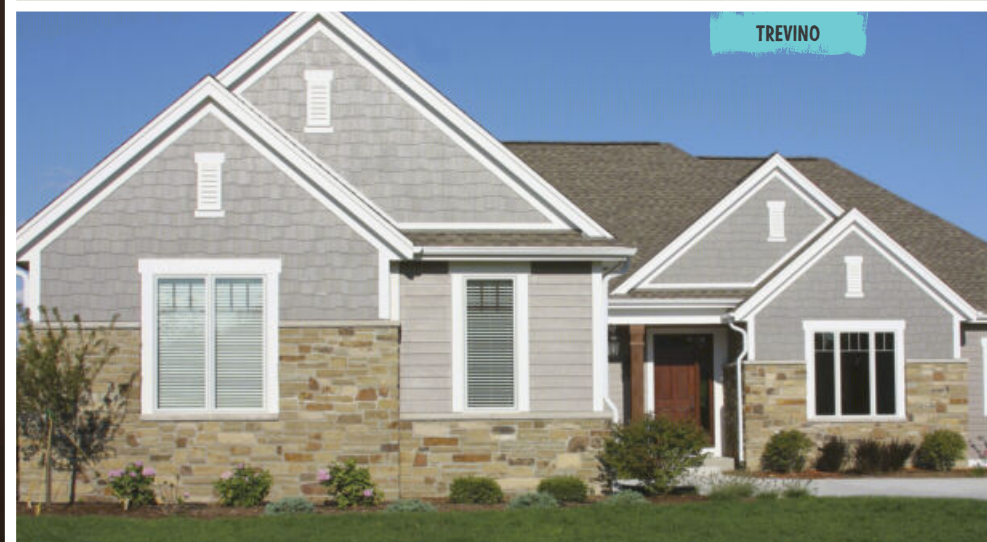
TUMBLD WILSEY BAY | BLEND

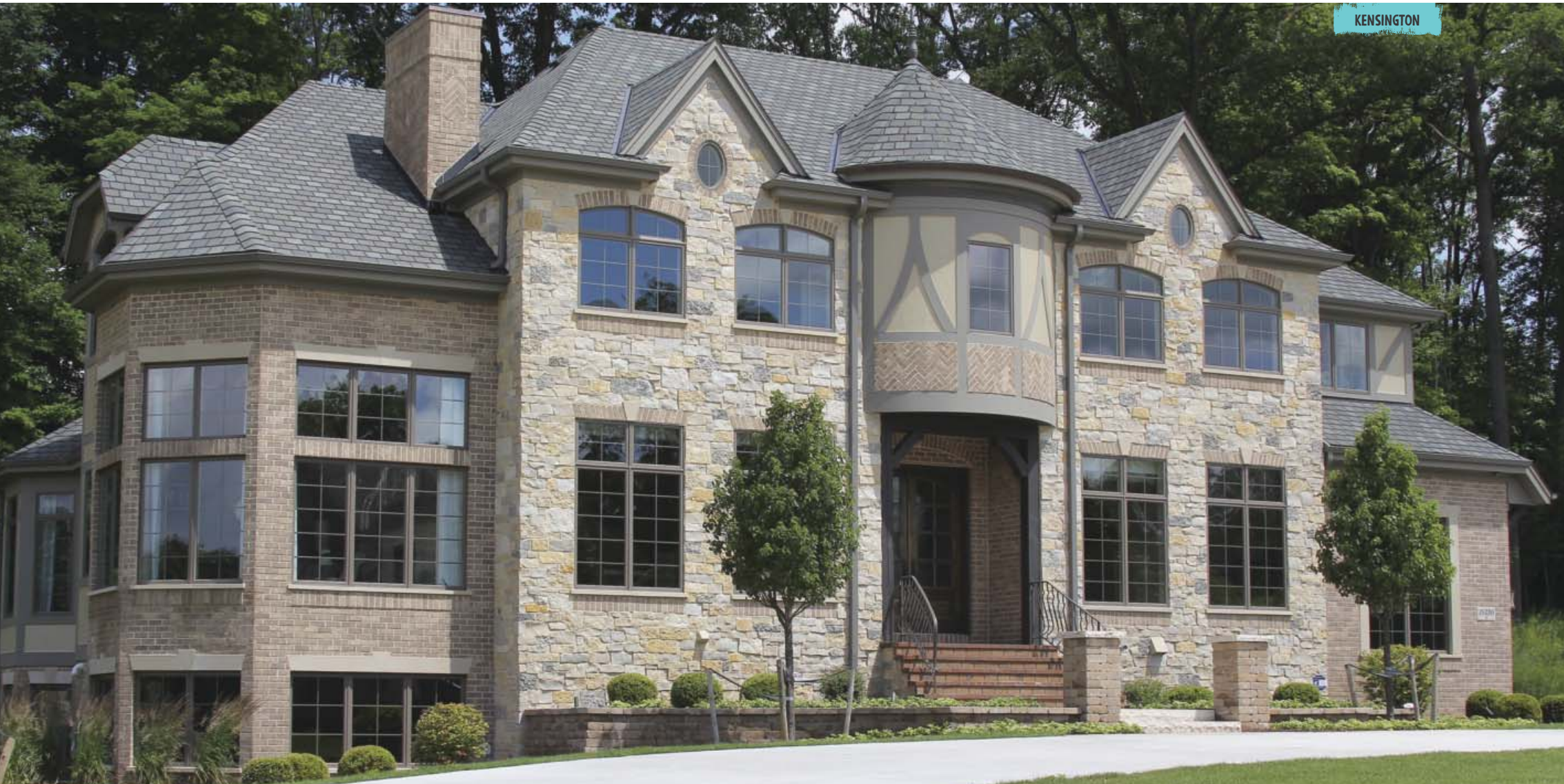


WILSEY BAY | BLEND

MANCHESTER







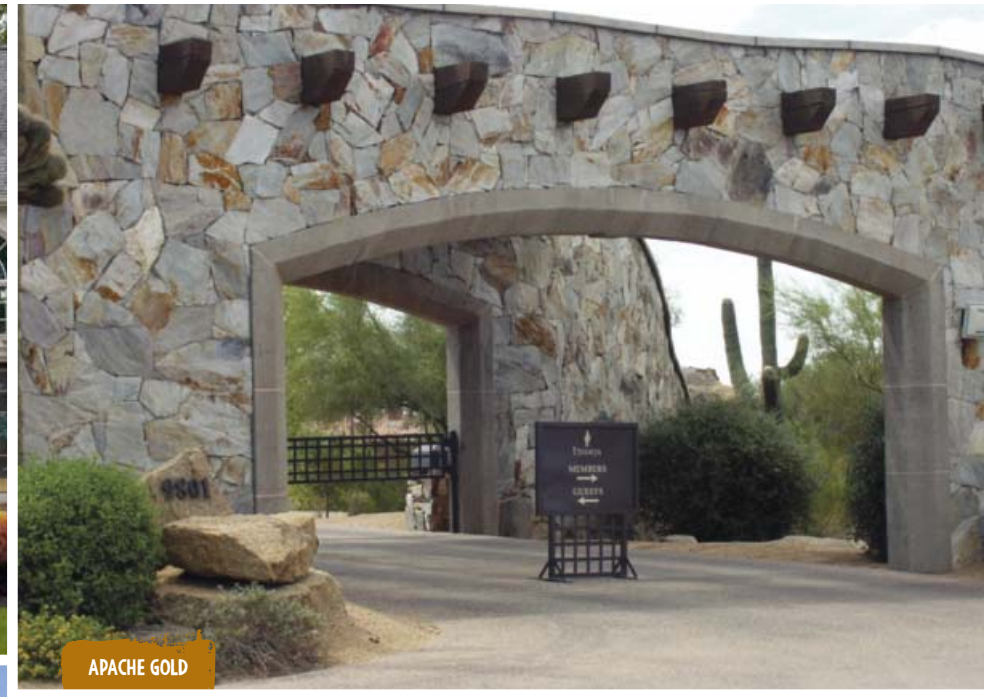
BEAVER CREEK MARSH



ARIZONA FLAGSTONE



APACHE CLOUD

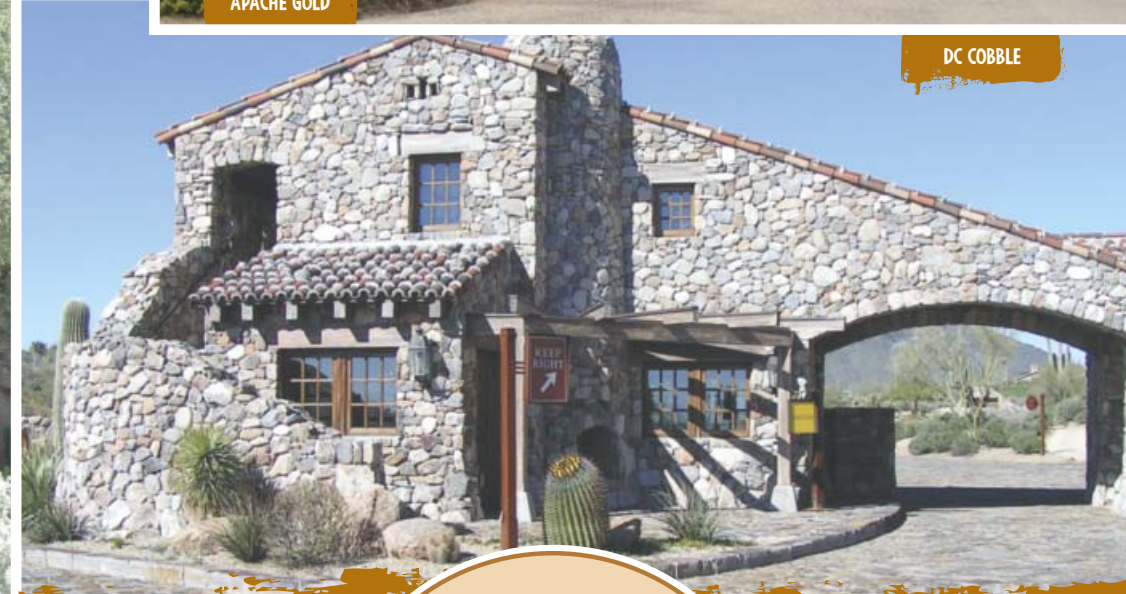


APACHE GOLD

APACHE PAINT



DC COBBLE



In 1979 Halquist opened Apache Stone in Phoenix, Arizona. This has provided us a reliable source to some of the most beautiful pebbles, flagstones, veneers and boulders in the world.

With three locations, the staff at Apache Stone are dedicated to creating and providing you with stone veneer that is exceptionally beautiful, incredibly affordable, easy to install, and above all, it's natural stone. For over 35 years Apache Stone has been distributing these stones from the Southwest desert and is one of the largest distributors of building stone in the Southwestern United States. We have the largest in-stock inventories ready to deliver to most anywhere in Nevada and Arizona.





Whether you're remodeling a historic home in New England, building a cabin in the mountains of Colorado, or your dream home in Seattle, Halquist Stone has the perfect stone blend to fit your every need. Halquist buyers have traveled the world in search of stones that are unique in color and capable of creating a home that will stand the test of time of great design and color. We distribute unique building stone from around the USA.

If you desire a particular blend of colors, let the experts at Halquist Stone custom create one for your architectural masterpiece.





MOOSE MOUNTAIN



GOLD MICA



DESIGNER SHOWROOM WITH HUNDREDS OF BLENDS TO VIEW | SUSSEX, WISCONSIN



MARBELLA



MCGREGOR LAKE



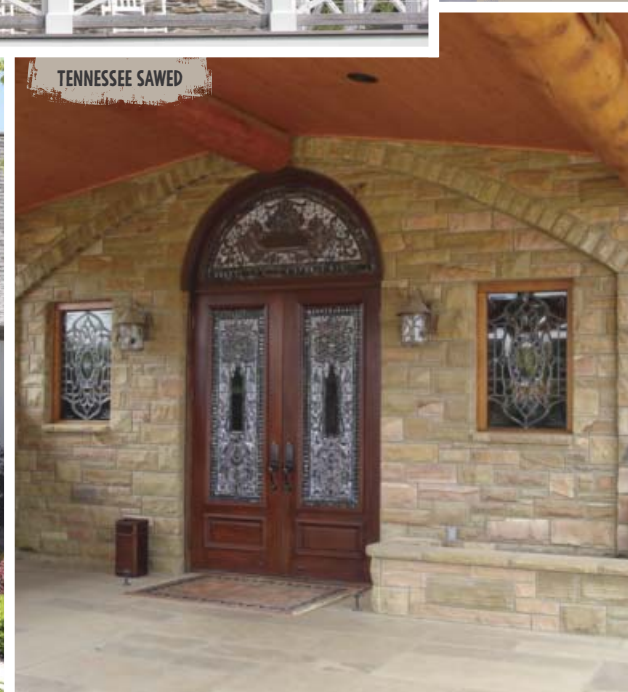
SHENANDOAH



WILDHORSE SWIRL



DELAWARE SANDSTONE



TENNESSEE SAWED



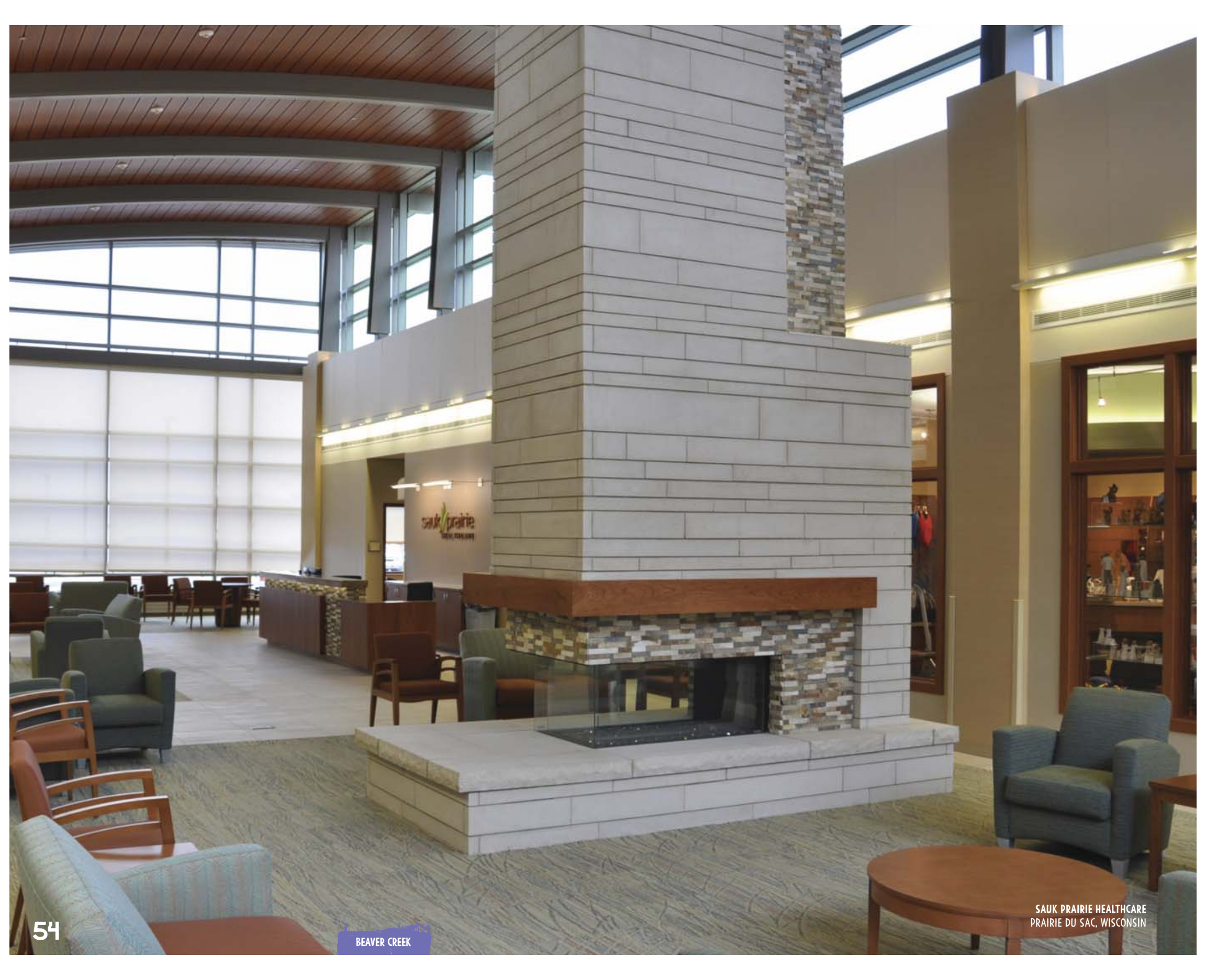
APACHE AUTUMN

As one of the largest fabricators of cut stone in the Midwest, Halquist combines modern technology with traditional craftsmanship to bring your unique vision to reality.

In addition to traditional limestone material, Halquist sources material from a variety of quarries. This allows a broad range of limestones, as well as sandstone, dolomite and granite. We offer architects, builders, landscapers and homeowners a versatility that is unmatched by any other fabricator of cut stone.

With Halquist's wide selection of colors, grades and sizes, we assure that all aesthetic requirements of the most demanding projects are met. Our old world craftsmanship with state-of-the-art 3,4 and 5 axis CNC machines and excellence in customer service match the broad range of colors and grades of stone that are available.





INDIANA LIMESTONE



ODESSA

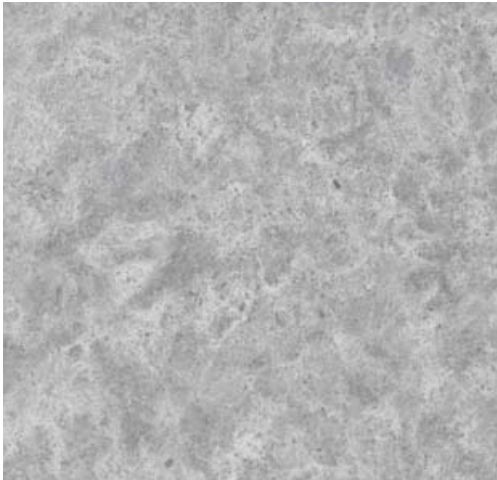


INDIANA LIMESTONE

LISBON BIANCO



HUDSON VALLEY



ALEUTIAN MARBLE | CUT STONE

PO HO BR BU SB EC



BENGAL | CUT STONE

PO HO BR BU SB EC



BIRMINGHAM BUFF | CUT STONE

TH PO HO BR BU SB EC



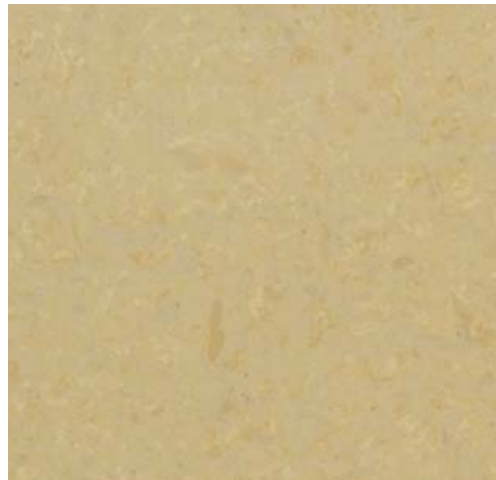
BLUE MESA | CUT STONE

TH HO BR BU SB EC



HAZELWOOD | CUT STONE

TH PO HO BR BU SB EC



HUDSON VALLEY | CUT STONE

TH HO BR BU SB EC



INDIANA BUFF | CUT STONE

PO HO BR BU SB EC



INDIANA GREY | CUT STONE

PO HO BR BU SB EC



KINGSFORD | CUT STONE

HO BR BU SB EC



LISBON BIANCO | CUT STONE

PO HO BR BU SB



ODESSA | CUT STONE

PO HO BR BU SB EC



PEWTER LANNON | CUT STONE

TH PO HO BR BU SB EC



PROVINCIAL BEIGE | CUT STONE

PO HO BR BU SB



TEXAS CREME | CUT STONE

HO BR BU SB



TUXEDO GREY | CUT STONE

TH PO HO BR BU SB EC

LEGEND KEY. Below are the finish capabilities of each stone profile

- TH** THERMAL
- PO** POLISHED
- HO** HONED
- BR** BRUSHED
- BU** BUSHHAMMERED
- SB** SANDBLASTED
- EC** EXTERIOR COPING

AMERICA'S MOST POPULAR FINISHES

SHOWN IN PEWTER



THERMAL



BUSHHAMMERED

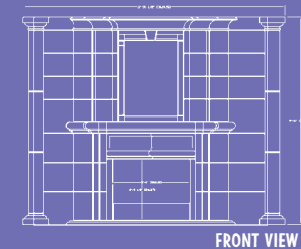


SANDBLASTED

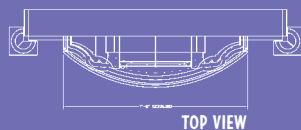
DESIGN ASSISTANCE

The natural depth of our cut stone, fabrication facilities and our architectural stone expertise, enables us to supply both large and small stone projects - commercial or residential.

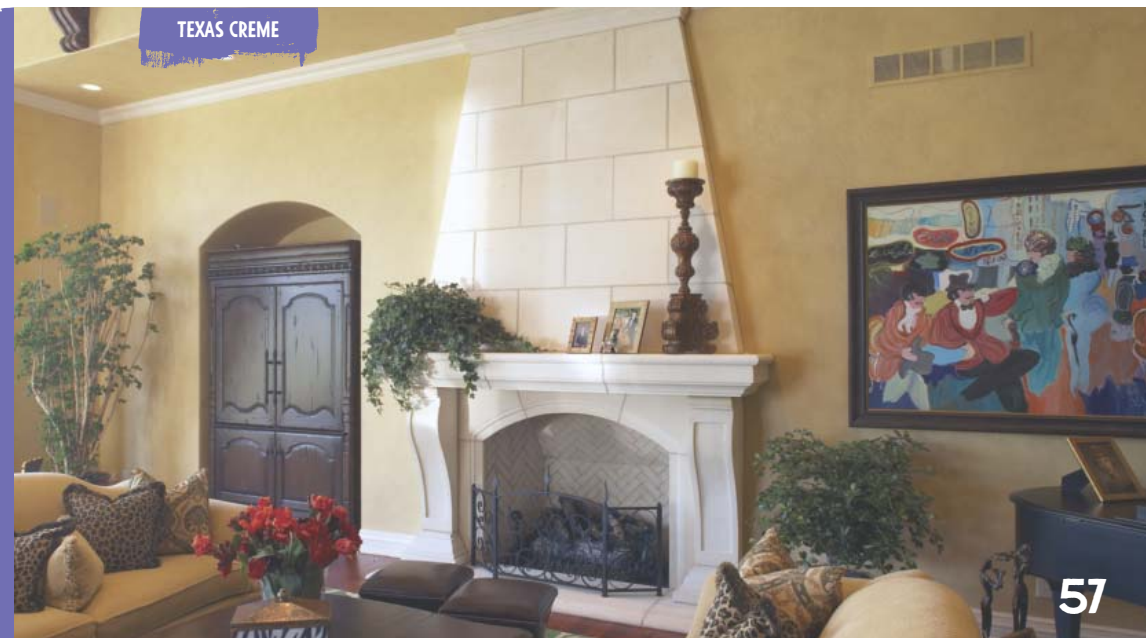
If you demand the best, we invite you to bring your dreams and imagination to our professionals. Our estimating department will put them to paper using the latest version of AutoCAD and drawing techniques. Once approved, we will bring it to reality with the latest CNC technology and old world craftsmanship so that it can be marveled for generations to come.



FRONT VIEW



TOP VIEW





THIS PROJECT ALSO FEATURES SAVANNAH 8-INCH WALLSTONE WITH SAVANNAH ROCKFACED RADIUS COPING AND TUMBLED PATTERN BLUESTONE PAVING.

METRA® RAIL STATION
OAK LAWN, ILLINOIS

Why consider stone from Halquist? For a number of solid, natural reasons. Natural stone is strong and stable to live with. It exudes a rich, organic beautiful surface and has a confident, timeless “presence” in any room that man-made material just can’t match.

Halquist Stone is proud to be the exclusive domestic manufacturer and supplier of Midwest dolomite limestone floor tiles. Our tile ranges in size from 8” x 8” to 24” x 24” with a 1mm tolerance on all deviations.

The beauty of a natural stone tile is that each has it’s unique color, veining and natural characteristics such as hardness and porosity. Each has it’s own style. Tiles are available in several finishes including: brushed, bushhammered, thermal, honed or polish finish. If your goal is a flooring solution for the way you live that is truly unique, undoubtedly individual and purely personal, Halquist’s exclusive line of Greyflek is a solid choice.





ALEUTIAN MARBLE | TILE
POLISHED, HONED OR BRUSHED



BENGAL | TILE
POLISHED, HONED OR BRUSHED



BLUE MESA | TILE
THERMAL, HONED OR BRUSHED



DOVER GREY | TILE
POLISHED, HONED OR BRUSHED



HAZELWOOD | TILE
THERMAL, POLISHED, HONED OR BRUSHED



HUDSON VALLEY | TILE
THERMAL, HONED OR BRUSHED



KINGSFORD | TILE
HONED OR BRUSHED



LISBON BIANCO | TILE
HONED OR BRUSHED



NICOLET | TILE
THERMAL, POLISHED, HONED OR BRUSHED



ODESSA | TILE
POLISHED, HONED OR BRUSHED



PEWTER HONED | TILE



PEWTER THERMAL | TILE



PLATINUM HONED | TILE



PROVINCIAL BEIGE | TILE
POLISHED, HONED OR BRUSHED



RAINBOW BEIGE | TILE
POLISHED, HONED OR BRUSHED



TUXEDO GREY | TILE
THERMAL, POLISHED, HONED OR BRUSHED

PEWTER HONED

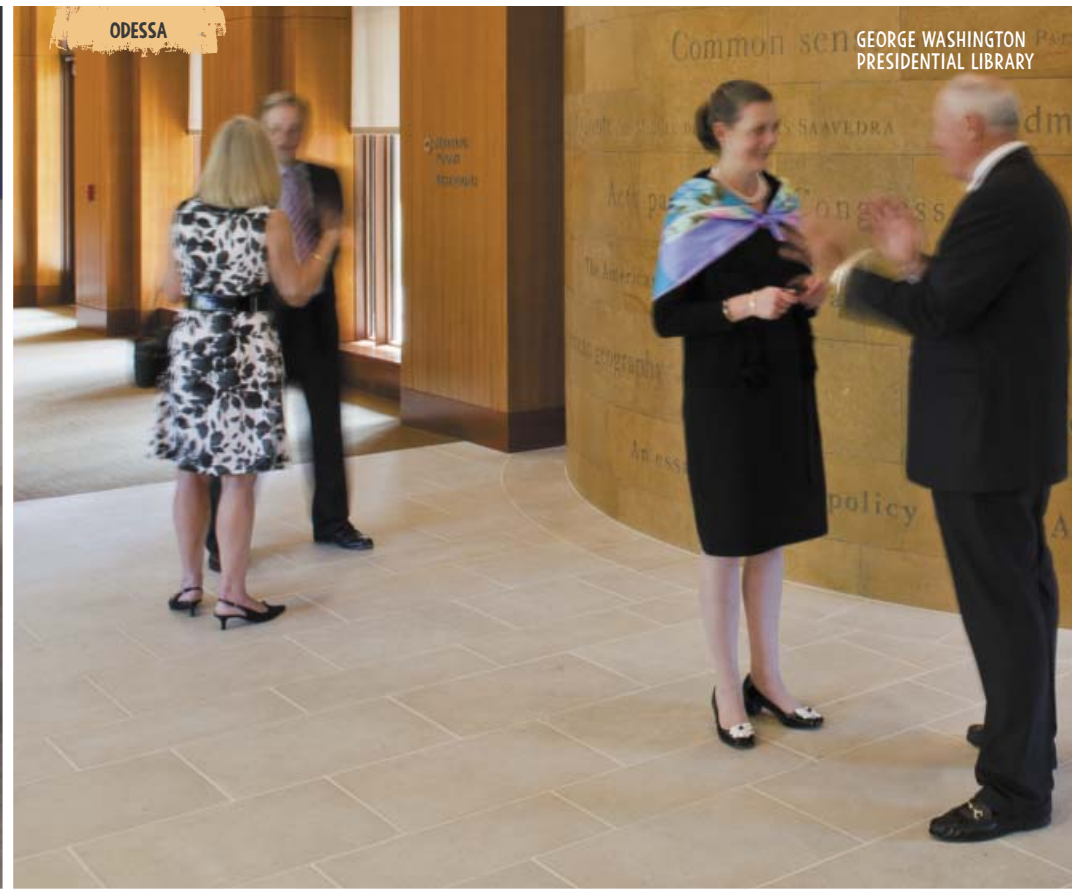


UNITED STATES CAPITOL VISITORS CENTER



NICOLET

ODESSA



GEORGE WASHINGTON PRESIDENTIAL LIBRARY

PLATINUM POLISHED

NEIMAN MARCUS
SAN ANTONIO, TEXAS



BLUE MESA



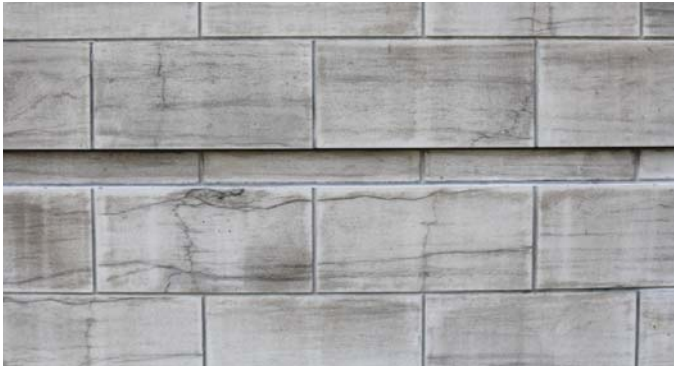


Precision. Uniformity. That's what stone panels from Halquist Stone is all about. Each piece is cut to specific dimensions, which makes it one of the easiest masonry installations available.

Natural stone panels have a significant advantage over concrete units. Stone panels from Halquist Stone offers architects and designers the freedom to select from a wide variety of colors and textures that simply can't be duplicated by man or a mold.

Typical stone panel installations are done in a running bond manner. They also can be installed in a stacked bond, creating a large grid appearance.





BENGAL | PANELS



CHILTON FULL COLOR | PANELS



FOND DU LAC SILVER | PANELS



HUDSON VALLEY | PANELS



LANNON BUFF | PANELS



LANNON GREY | PANELS



PEWTER GREYFLEK | PANELS



SONOMA | PANELS



TUXEDO GREY | PANELS



WAUKESHA BROWN | PANELS



WAUKESHA BUFF | PANELS

PEWTER HONED

EPIC SYSTEMS CORPORATION
VERONA, WISCONSIN



UNIVERSITY OF WISCONSIN
SCHOOL OF PHARMACEUTICALS
MADISON, WISCONSIN



HUDSON VALLEY

BENGAL

FEATURES PANELS AND TILE
MANHATTAN, NEW YORK



GRAND VALLEY STATE
UNIVERSITY
ALLEDALE, MICHIGAN



LANNON FULL COLOR

WAUKESHA BUFF

DENVER ART MUSEUM
DENVER, COLORADO



CHILTON WEATHEREDGE
OUTCROPPING

ALSO FEATURES WINNEBAGO OUTCROPPING
JORDAN CREEK MALL - WEST DES MOINES, IOWA



Create an outdoor escape where jealousy comes standard. Landscape designers around America know that Halquist Stone is the premier supplier for top quality landscape stone. Our extensive selection from outcropping and drywall to flagstone will accent any project. And with nine quarries throughout the Midwest, our variety of colors and textures are hard to beat.

For more information on our landscape collection, request your copy of our Landscape Edition catalog online at halquiststone.com or ask a sales representative today.





LANNON WEATHEREDGE OUTCROPPING



FOND DU LAC FLAGSTONE



THERMAL GREYFLEK



WAUKESHA BUFF WALLSTONE



CHILTON WEATHEREDGE WALLSTONE



LANNON STEPS AND WALLSTONE

PROUD MEMBERS OF THESE FINE ORGANIZATIONS



BECAUSE NATURAL STONE IS MADE FROM NATURE, VARIATIONS SHOULD AND CAN BE EXPECTED. EVEN THOUGH COLORS IN THIS BROCHURE ARE AS CLOSE TO THE ACTUAL BLEND AS POSSIBLE, PHOTOGRAPHIC AND PRINTING TECHNIQUES - AND ACTUAL VIEWING CONDITIONS - CAN ALTER PERCEPTION OF COLOR.

800.255.8811 | halquiststone.com

ONLINE RESOURCES



HALQUIST
S T O N E