

KING'S
MATERIAL INC.

**COMPAC III
STRAIGHTFACE**



KEYSTONE
RETAINING WALL SYSTEMS
A CONTECH COMPANY

Visit one of our showrooms or learn more at kingsmaterial.com

Cedar Rapids 319.363.0233 Coralville 319.354.1003 Eldridge 563.285.2565 Waukee 515.978.6852

PRODUCT INFORMATION

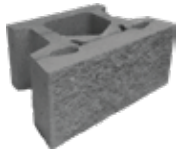
Keystone Compac units are made of high-strength, low absorption concrete for long lasting structures. All structural units are interconnected using high strength fiberglass pins for a strong shear connection. The connecting pins allow for ease of unit alignment and a secure, positive mechanical connection with soil reinforcement materials. Keystone's patented pin system is the critical difference providing the safety and security of a structural retaining wall solution.

FEATURES

- High Strength Pin Connection System
- Structural Integrity
- Ease of Installation
- Aesthetics
- Design Versatility



PRODUCT SPECIFICATIONS



**Compac III
Hard-Split Straight Face**
8 x 18 x 12

Weight: 72# ea



Hard-Split Corner
8 x 18 x 9



4" Hard-Split Cap
4 x 15 $\frac{1}{8}$ x 9 $\frac{3}{8}$

Weight: 47# ea

COLORS



Charcoal



Grey



Granite



Harvest



Taupe



Walnut

Due to inherent characteristics of concrete, color may vary slightly. No guarantee of color shade is made or implied.